

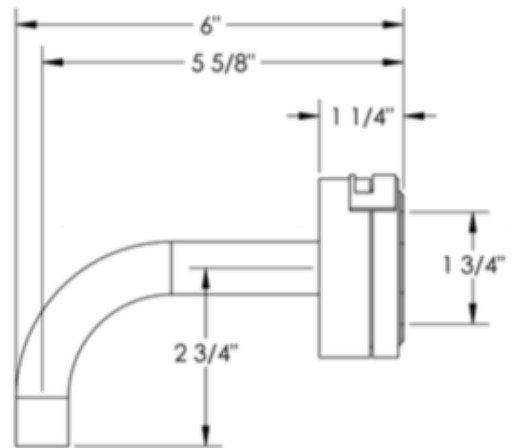


## Watermark Elements Wall Mounted Faucet-Medium

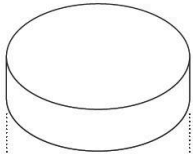
SHOWN IN POLISHED UNLACQUERED BRASS + TEAK SCALLOP INSERT



- Single Handle Wall Mounted Lavatory w/ 6" spout
- Flow Rate: 1.2 GPM
- Meets the applicable requirements of ASME A112.18.1-2005/CSA B125.1-05, entitled "Plumbing Supply Fittings"

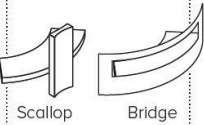


## ELEMENTS



### COVER

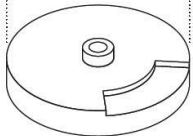
Select one of the covers from our designer-maker friends to add texture & contrast to your creation.



### INSERT

Select from one of the magnetic insert options, Bridge or Scallop, designed to help you to grip the handle.

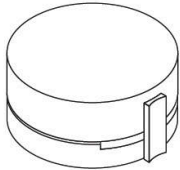
Select a complementary finish from our range for your chosen Insert.



### HANDLE BASE

Select a finish for the main components and handle base.

## INSERTS

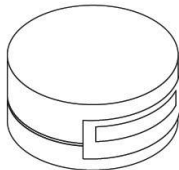


### SCALLOP INSERT

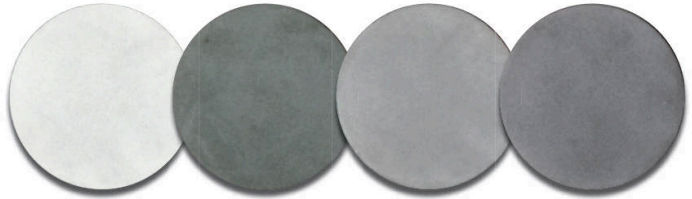
The completed handle with Scallop insert.

### BRIDGE INSERT

The completed handle with Bridge insert.

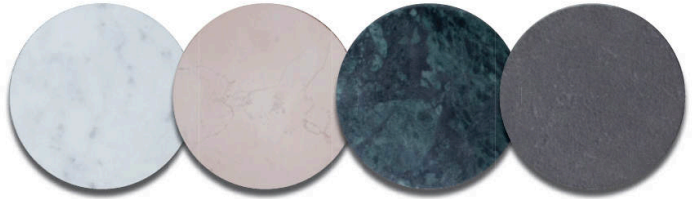


## COVERS



**RAW** – Hand poured, sealed and reinforced concrete.

**Choose from:** Chalk, Military, Poured & Screed.  
**Created by:** JM Lifestyles, USA.



**ROCK** – Uniquely hand worked natural stones and marbles.

**Choose from:** Carrara, Exquisite Rose, Jungle & Volcano.  
**Created by:** Marmi Serafini, Italy.



**LUMBER** – Real wood grain and texture captured and sealed into concrete.

**Choose from:** Charred, Ground, Smoked & Teak.  
**Created by:** WoodForm, USA.



**FORGED** – Unique creations using techniques in liquid metal and lacquer.

**Choose from:** Oil Slick & Oxblood.  
**Created by:** Anka, UK.